



# Organogram of Bangladesh Wheat and Maize Research Institute

## Headquarter: Nashipur, Dinajpur

### Functions

- Development and implementation of wheat and maize improvement and production related policies and work plan for the institute;
- Conduct basic and applied research on different issues related to wheat and maize improvement and production and technology development;
- Establishment of Laboratory with modern facilities, establishment of research field and infrastructure.
- Create facilities for germplasm collection and conservation;
- Providing enough information and training to the farmers for increasing productivity of wheat and maize;
- Appraisal of climate change impact on wheat and maize production, conduct and implement related research on it;
- Production of breeders and quality seed of wheat and maize;
- Publication of booklets, monogram, bulletin and other research reports on wheat and maize;
- Undertake research programmes in collaboration with national and international organizations.

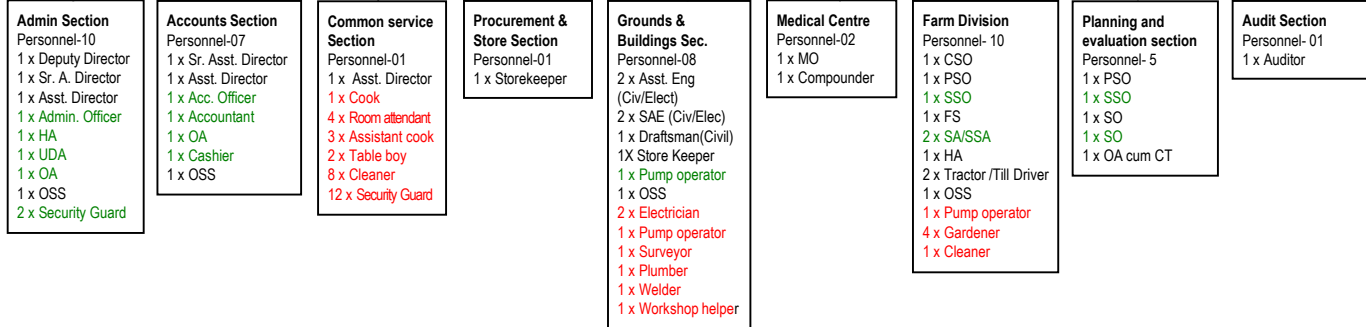
### Objectives

- Collection and conservation of wheat and maize germplasm, hybridization, evaluation and variety release;
- Development of wheat and maize varieties for regular and stressed environments (heat, salt, drought and water lodging);
- Development of modern and improved technologies;
- Production of quality and breeder seed of developed varieties;
- Arranging workshop, field day for disseminating technologies;
- Human resource development, administrative and financial management;
- Providing e-service;
- Collaboration with national and international organizations.

**Director General Office**  
 Personnel 03  
 1x Director General  
 1x Personal Assistant (PA)  
 1 x Office Supporting Staff (OSS)

**Administration-Finance and Planning Wing**  
 Personnel-03  
 1 x Director (A-F& P)  
 1 x PA  
 1 x OSS

**Research, Training & Technology Transfer Wing**  
 Personnel- 3  
 1 x Director (R, T&TT)  
 1 x PA  
 1 x OSS



**Training and Technology transfer section**  
 Personnel-06  
 1 x PSO  
 1 x SSO  
 1 x SO  
 1 x SA  
 1X Stenographer/CO  
 1 x OA cum CT  
 1 x Training room attendant

**Library**  
 Personnel- 01  
 1 x Librarian  
 1 x Library attendant

### Summary of Manpower

Post Name	Existing Revenue	Total
Director General	-	1
Director	1	2
Chief Scientific Officer	3	7
Principal Scientific Officer	11	20
Deputy Director	-	1
Senior Scientific Officer	21	30
Senior Assistant Director	-	2
Assistant Maintenance Engineer	-	1
Assistant Programmer	-	1
Scientific Officer/ Farm Superintendent	25	41
Medical Officer	-	1
Assistant Director	-	3
Assistant Engineer	-	2
Grade 1 - 9	61	112
Grade10	2	8
Grade 11 - 18	38	95
Grade 19 - 20	3	21
Total =	104	236
Out sourcing		98

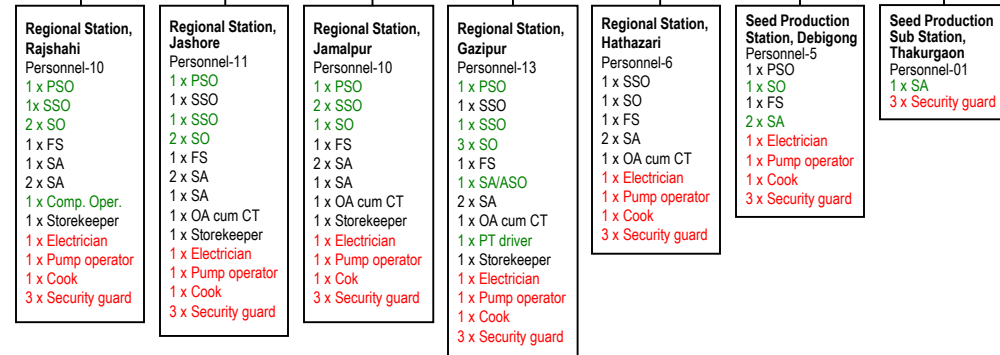
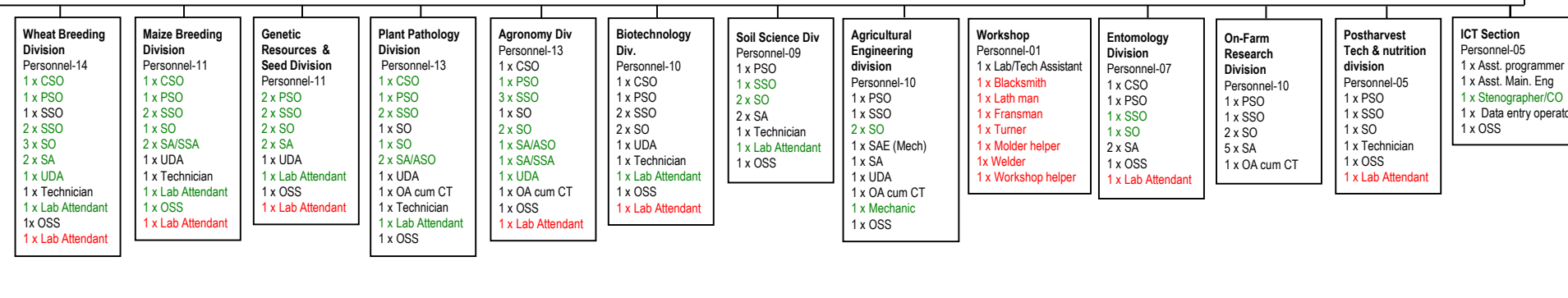
### Transport and major equipments

#### Transport

Sl No	Name	Existing	Additional	Total
1	Jeep	3	14	17
2	Pickup	5	20	25
3	Microbus	3	7	10
4	Minibus	2	6	8
5	Ambulance	-	3	3
6	Truck	1	2	3
7	Mini truck	0	3	3
8	Bus	-	5	5
9	Motor cycle	33	117	150

#### Office and field equipment

Sl no	Name	Existing	Additional	Total
1	Photocopier	5	20	25
2	MM Projector	4	18	22
3	Computer (Desktop)	20	200	220
4	Computer (Laptop)	5	25	30
5	Telephone exchange	1	4	5
6	Telephone line	5	245	250
7	Air Conditioner: window type	12	68	80
8	Air Conditioner: Split type	8	132	140
9	Generator	3	21	24
10	Tractor	10	8	25
11	Power tiller	15	35	50
12	Combined harvester	6	14	20
13	Thrasher	6	24	30
14	Seeder	6	24	30
15	Seed grader	5	13	18
16	Irrigation pump	4	11	15



- Approved post (existing)
- Approved post (created)
- Outsourcing